

LOKACIJA 29

(K.O. NIKŠIĆ)

ELEMENTI KRIVINA :

At1

R=100.000
Ec=6579052.342
Nc=4737124.019
Az1=354d34'23.5"
Az2=357d40'53.4"
L=5.425

At2

R=40.000
Ec=6579132.922
Nc=4737103.064
Az1=85d0'31.0"
Az2=98d57'31.8"
L=9.739

At3

R=35.000
Ec=6579146.519
Nc=4737106.895
Az1=51d55'38.4"
Az2=85d0'31.0"
L=20.208

Koordinate presjeka osovina saobraćajnica		
Tačka	Y	X
A1	6579146.856	4737061.533
A2	6579153.122	4737141.267
A3	6579205.708	4737104.990
A4	6579219.379	4737094.281

Koordinate presjeka osovina tangen. saobrać.		
Tačka-At	Y	X
01	6579152.150	4737117.263
02	6579131.527	4737143.338
03	6579159.919	4737140.858

LEGENDA

- 1 2 GRANICA OBUHVATA
GRANICA KATASTARSKE PARCELE
OZNAKA KATASTARSKE PARCELE
POVRŠINE ZA STAN.SREDNIJH GUSTINA
URBANISTIČKA PARCELA
UP 1 OZNAKA UP
1 2 GRAĐEVINSKA LINIJA
P+3 SPRATNOST OBJEKTA

KOORDINATE PRELOMNIH TAČAKA LOKACIJE 29

REDNI BROJ	X	Y
01	4737211.60	6579145.61
02	4737172.59	6579196.10
03	4737138.84	6579170.06
04	4737135.07	6579167.28
05	4737141.76	6579149.56

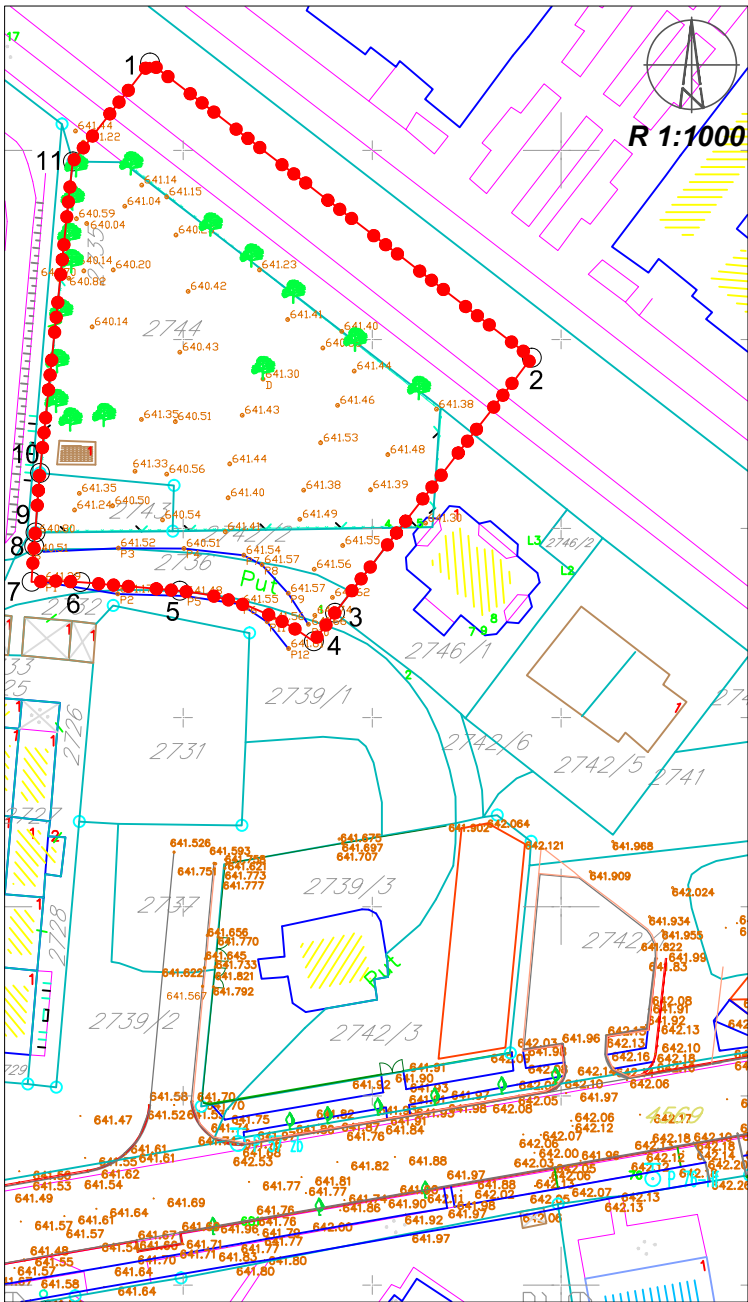
KOORDINATE PRELOMNIH TAČAKA UP1

REDNI BROJ	X	Y
01	4737198.53	6579135.40
02	4737198.42	6579142.03
03	4737165.99	6579184.06
04	4737162.54	6579188.35
05	4737138.84	6579170.06

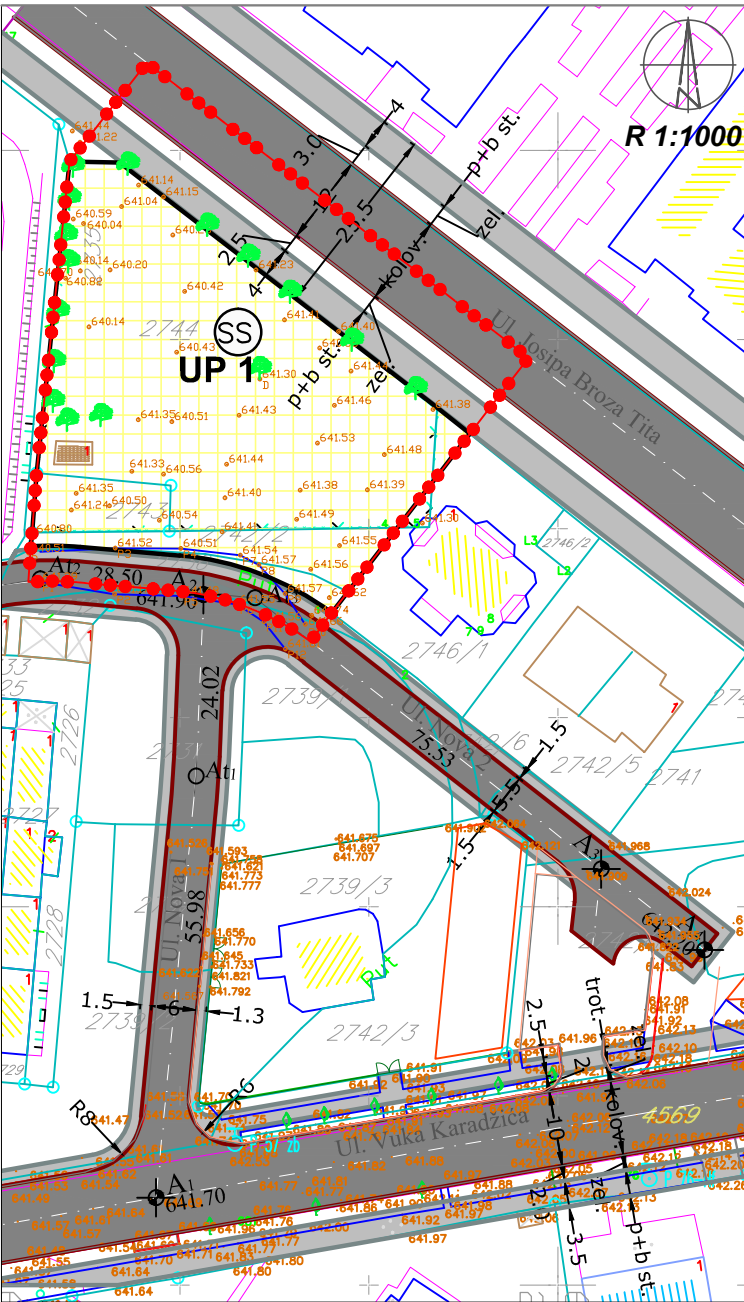
KOORDINATE PRELOMNIH TAČAKA GL

REDNI BROJ	X	Y
01	4737185.29	6579144.56
02	4737157.42	6579180.62
03	4737146.74	6579172.37
04	4737174.66	6579136.24
06	4737146.43	6579149.97
07	4737147.57	6579136.81
08	4737147.67	6579130.31
09	4737149.48	6579130.45
10	4737157.34	6579131.04

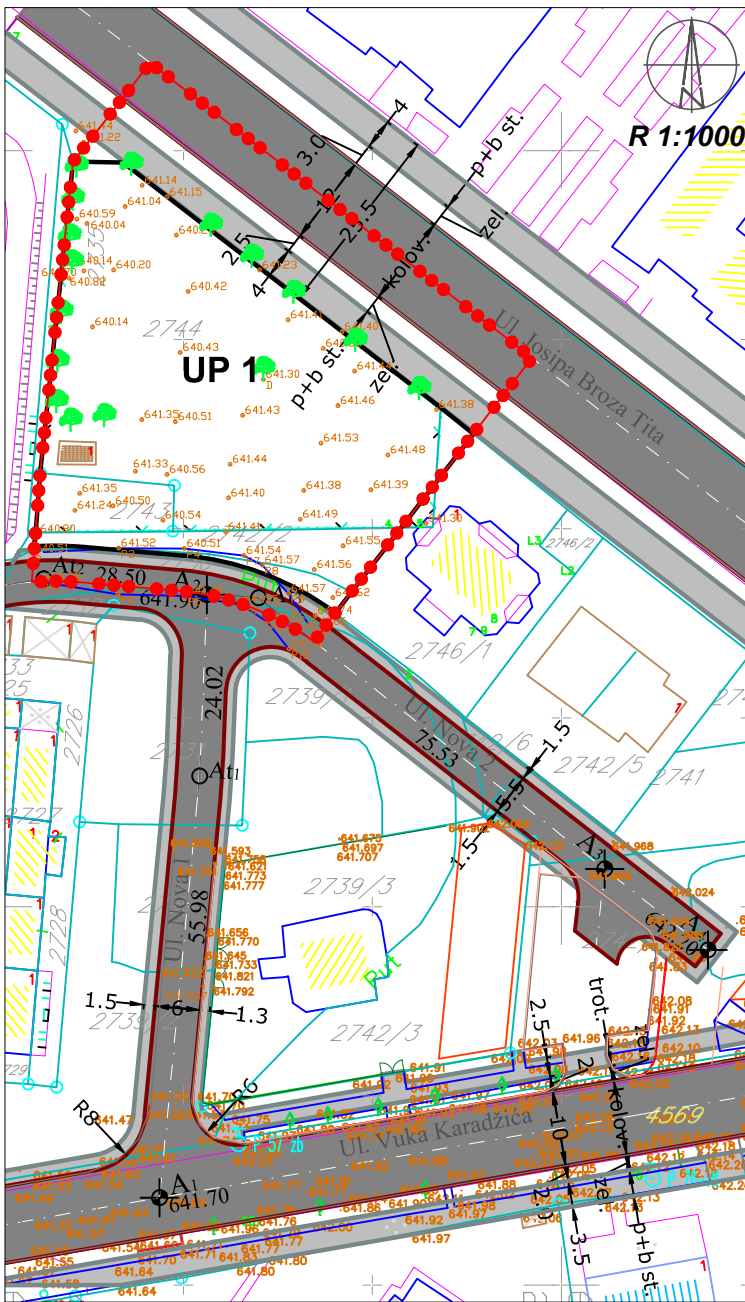
TOPOGRAFSKO KATASTARSKI PLAN



NAMJENA POVRŠINA



SAOBRAĆAJNA INFRASTRUKTURA



PLAN PARCELACIJE I REGULACIJE

